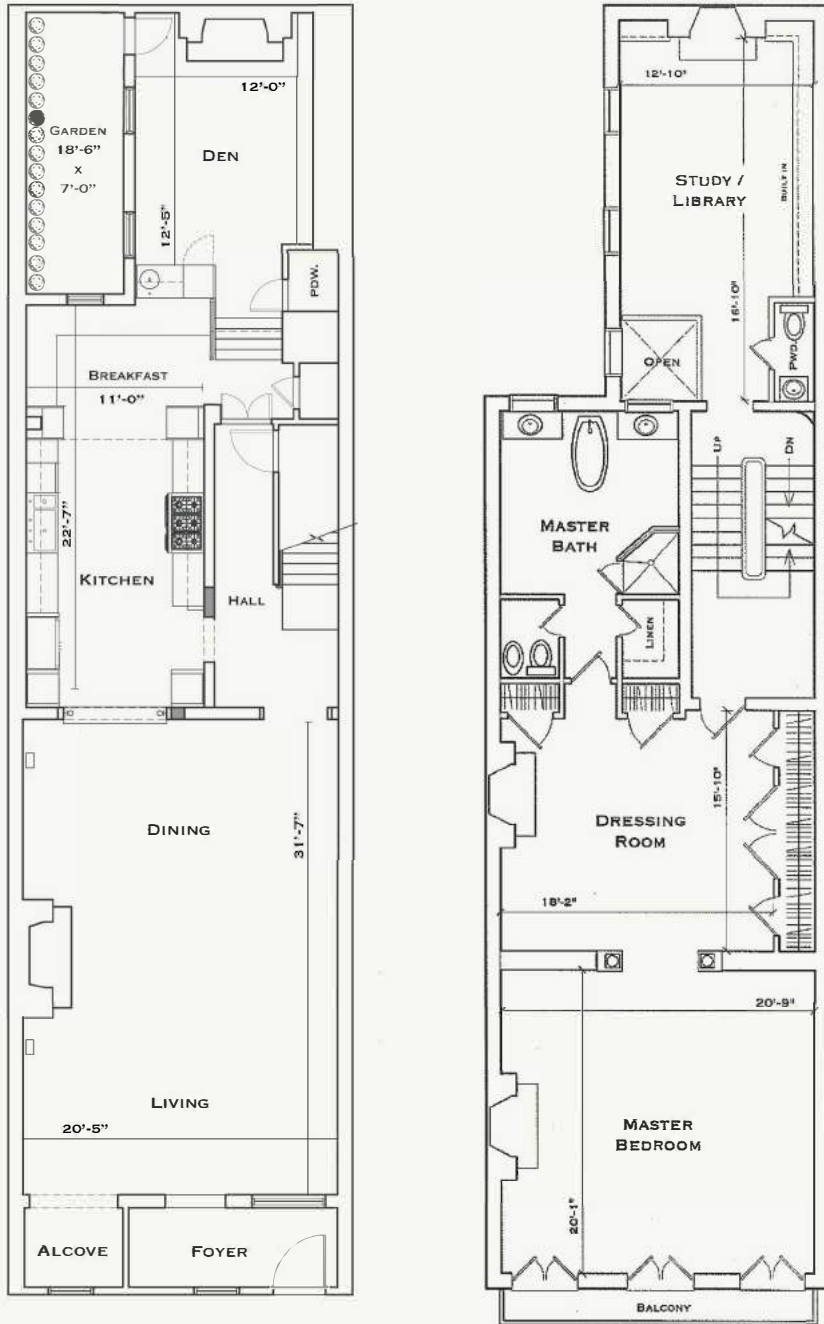


# TOURAINÉ

1531 SPRUCE STREET TOWNHOUSE • 5,440 SQUARE FEET • 5 BEDROOMS / 5 FULL and 2 HALF BATH



## FEATURED TOWNHOUSE DETAILS

The Townhouse at the Touraine offers all of the conveniences of an apartment building but in your own 5,440 square foot historic single family home. Use the gym and business center at the Touraine, enjoy 24/7 front desk service and maintenance requests, but come home to your elegant townhome directly across the street.

- 5,440 sq ft
- 5 Bedrooms
- 5 Full baths
- 2 half baths
- Roof deck
- Patio
- One car parking available at the Touraine

- 9 ft + ceilings
- Skylights
- Leaded glass
- Refinished wood floors
- Crown molding and chair rail
- Grand staircase
- Atrium
- 8 gas fireplaces

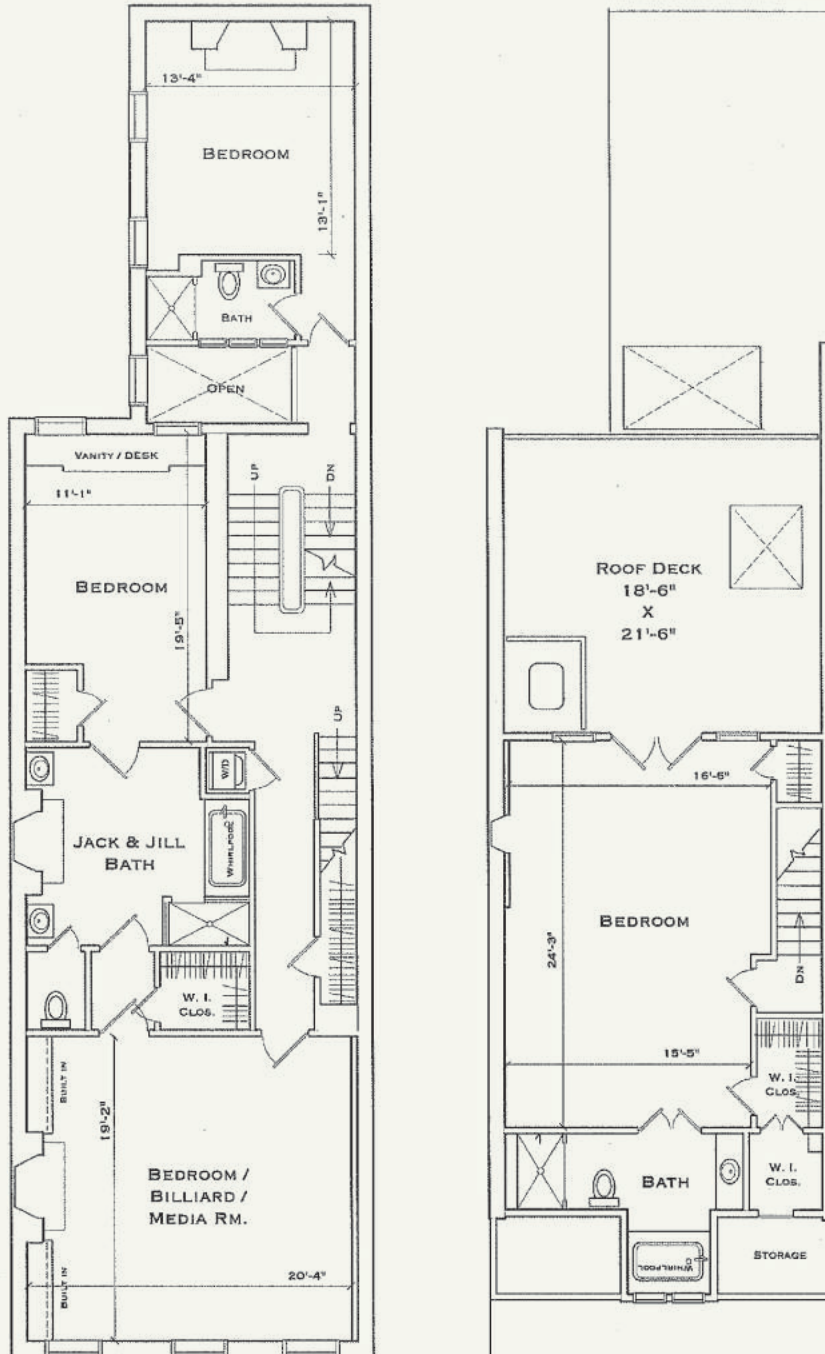
- Vestibule entrance
- Media Room
- Eat in catering-style Kitchen
- Wine refrigerator
- Upper floor laundry
- Finished basement with full bath, whirlpool tub, sauna and laundry

- Hospitality Suites at the Touraine
- Package Room in the Touraine lobby
- Pay rent & request maintenance online
- Pet friendly
- Business Center, Yoga Studio & Fitness Center at the Touraine
- Rival Bros. Coffee located adjacent to lobby
- 24/7 Front Desk Staff
- 24/7 Maintenance Staff

*Note: Rent subject to change. Room sizes are approximate.*

# TOURAINÉ

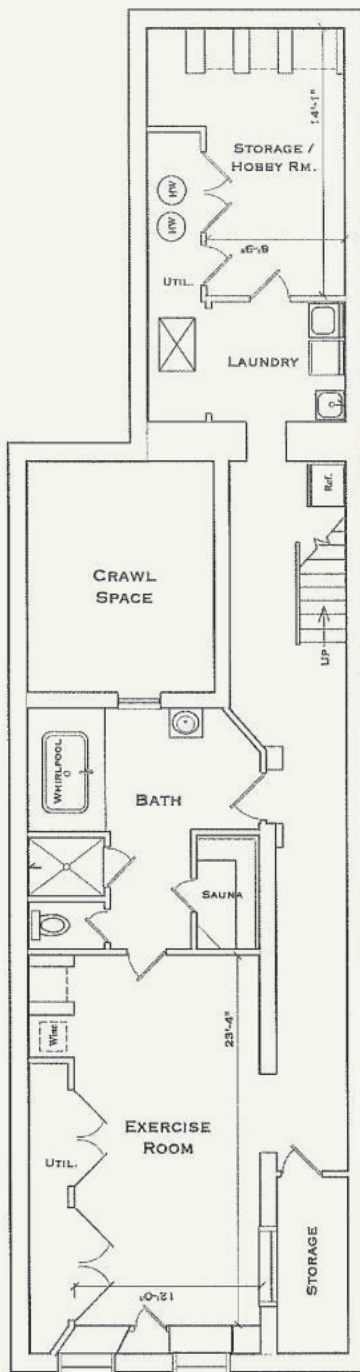
1531 SPRUCE STREET TOWNHOUSE • 5,440 SQUARE FEET • 5 BEDROOMS / 5 FULL and 2 HALF BATH



*Note: Rent subject to change. Room sizes are approximate.*

# TOURAINÉ

1531 SPRUCE STREET TOWNHOUSE • 5,440 SQUARE FEET • 5 BEDROOMS / 5 FULL and 2 HALF BATH



*Note: Rent subject to change. Room sizes are approximate.*